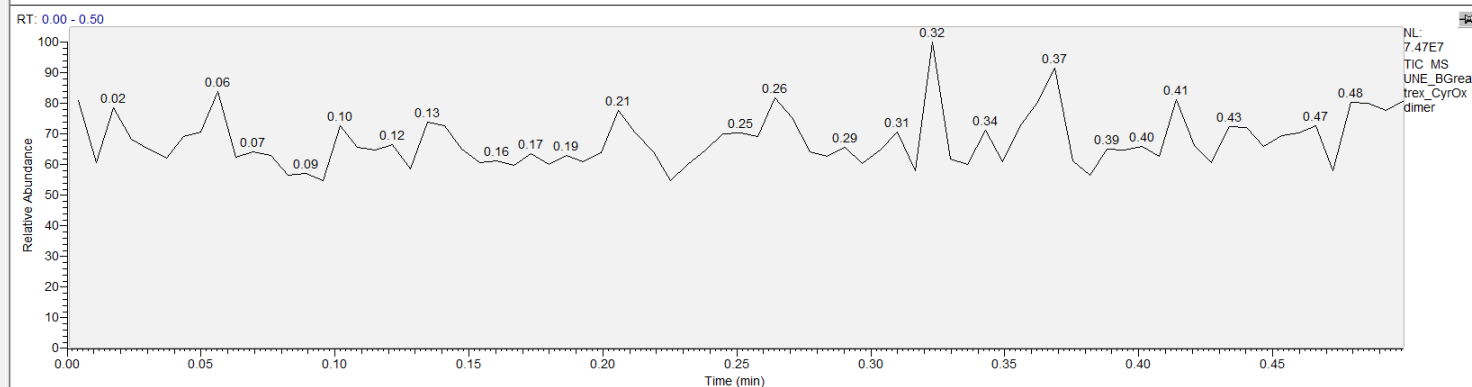
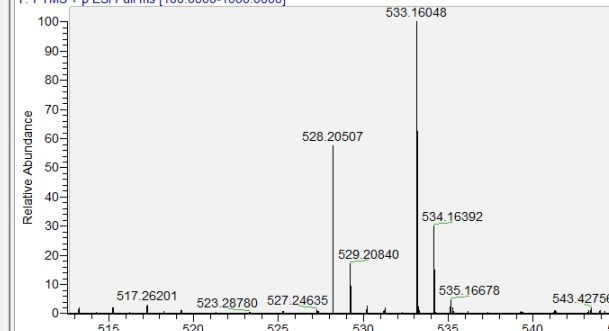


E:\Users\...UNE\_BGreatrex\_CyrOxdimer

12/04/23 10:06:58



UNE\_BGreatrex\_CyrOxdimer #1-77 RT: 0.00-0.50 AV: 77 NL: 1.60E6  
T: FTMS + p ESI Full ms [100.0000-1000.0000]



## Elemental composition search on mass 533.16

m/z= 528.16-538.16

m/z	Theo. Mass	Delta (ppm)	RDB equiv.	Composition
533.16048	533.16048	0.00	0.5	C <sub>13</sub> H <sub>34</sub> O <sub>7</sub> Na <sub>8</sub> S <sub>3</sub>
533.16045	533.16045	0.07	13.5	C <sub>28</sub> H <sub>30</sub> O <sub>7</sub> Na <sub>8</sub> S
533.16044	533.16044	0.08	19.0	C <sub>27</sub> H <sub>24</sub> O <sub>2</sub> N <sub>7</sub> Na <sub>8</sub> S
533.16054	533.16054	-0.11	12.0	C <sub>21</sub> H <sub>25</sub> O <sub>7</sub> N <sub>7</sub> Na <sub>2</sub>
533.16054	533.16054	-0.12	6.5	C <sub>22</sub> H <sub>31</sub> O <sub>12</sub> Na <sub>2</sub>
533.16039	533.16039	0.17	2.0	C <sub>20</sub> H <sub>39</sub> O <sub>7</sub> N <sub>4</sub> S <sub>4</sub>
533.16038	533.16038	0.18	7.5	C <sub>19</sub> H <sub>33</sub> O <sub>2</sub> N <sub>8</sub> S <sub>4</sub>
533.16035	533.16035	0.25	20.5	C <sub>34</sub> H <sub>29</sub> O <sub>2</sub> S <sub>2</sub>
533.16066	533.16066	-0.34	3.5	C <sub>21</sub> H <sub>39</sub> O <sub>4</sub> N <sub>2</sub> Na <sub>8</sub> S <sub>4</sub>
533.16026	533.16026	0.41	10.5	C <sub>20</sub> H <sub>26</sub> O <sub>10</sub> N <sub>6</sub> Na